

Set-Up Instructions

L-Banner

L-Banner Parts

www.fgcana.com

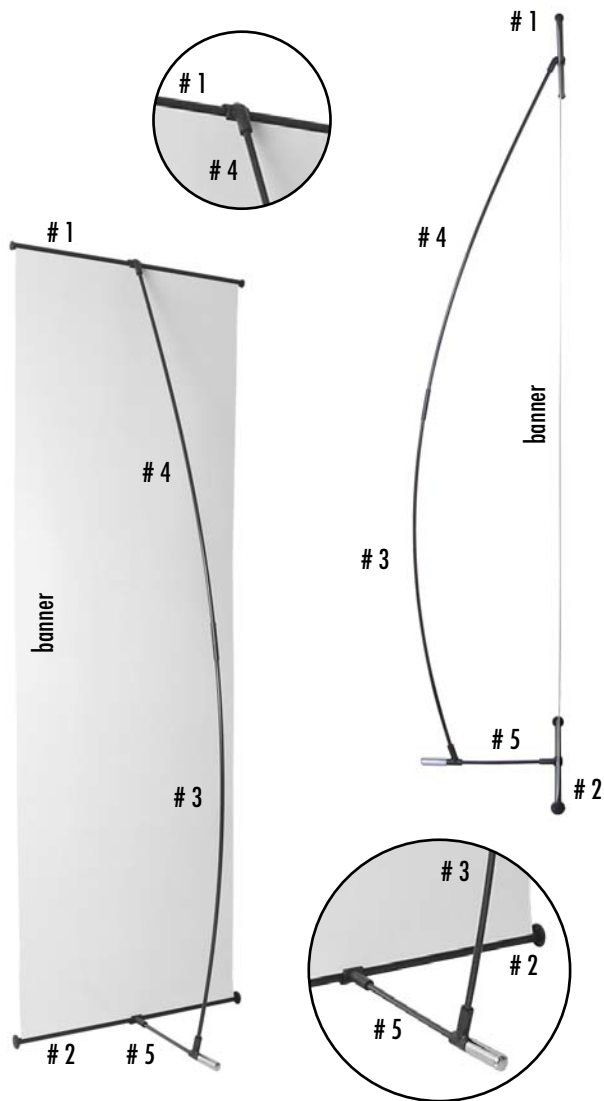
1. Top Horizontal Bar

2. Bottom Horizontal Bar

3. Back Lower Vertical Bar

4. Back Upper Vertical Bar

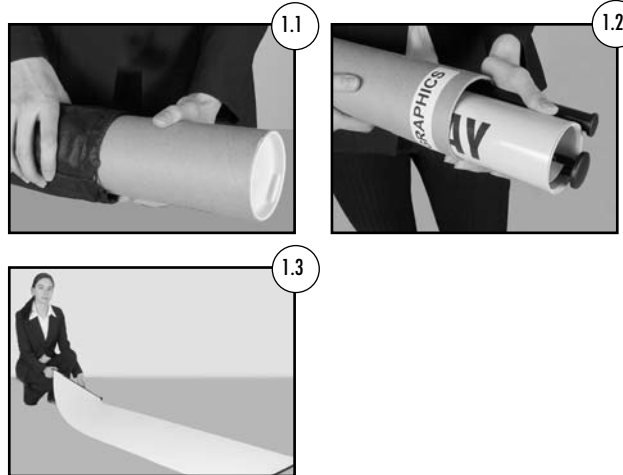
5. Base



Step 1.

unpack

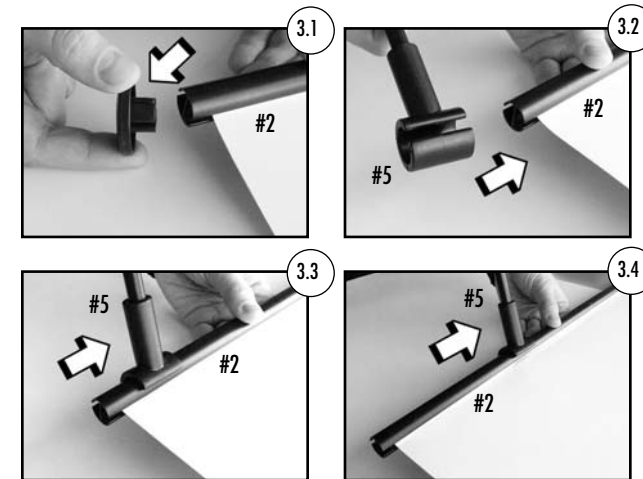
- 1.1 Take the cardboard tube out of the nylon bag.
- 1.2 Find the "GRAPHICS" sticker and take out the banner from that side.
- 1.3 Put the banner on the floor face down.



Step 3.

#2 + #5

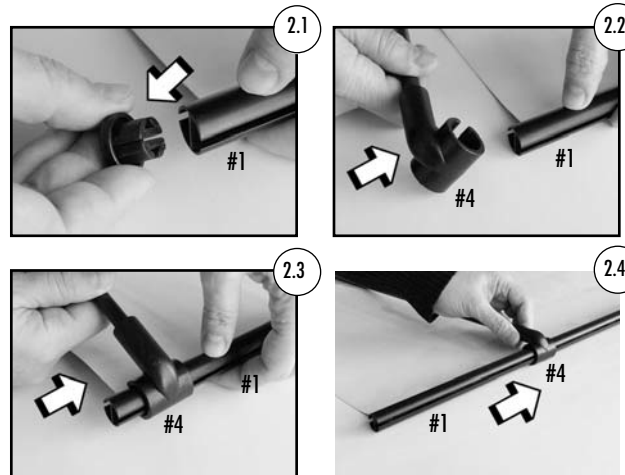
- 3.1 Remove a plug from one side of the Bottom Horizontal Bar (#2). Do not twist, just pull it off gently.
- 3.2-3.3 Attach the Base (#5) to the Bottom Horizontal Bar (#2).
- 3.4 Pull the Base (#5) to the centre of the Bottom Horizontal Bar (#2).



Step 2.

#1 + #4

- 2.1 Remove a plug from one side of the Top Horizontal Bar (#1). Do not twist, just pull it off gently.
- 2.2-2.3 Attach the Back Upper Vertical Bar (#4) to the Top Horizontal Bar (#1).
- 2.4 Pull the Back Upper Vertical Bar (#4) to the centre of the Top Horizontal Bar (#1).



Step 4.

#3 + #4 + #5

- 4.1-4.2 Connect the Back Lower Vertical Bar (#3) with the Back Upper Vertical Bar (#4)
- 4.3-4.4 Insert the end of the Back Lower Vertical Bar (#3) into T-shape part of the Base (#5).

